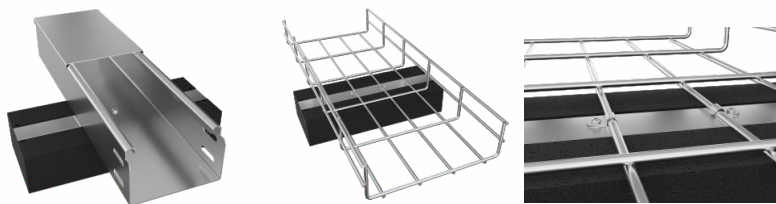


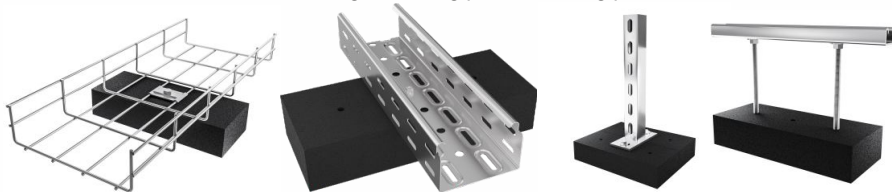
item number: **PPS1 L30_GZM**
PPS1 3XM8_GMLZ

product description: The pads are designed to support cable trays on flat roofs.
 The pad is made of a rubber material that is completely resistant to UV radiation (UV radiation can cause colour changes).
 On the underside of the pad is an aluminium foil with anti-slip treatment which works as an insulating layer for direct contact with roofs made of PVC material.
 The pad is suitable for cable trays up to 250 mm. For wider trays it is possible to use two pads next to each other. The size/weight of the pad is suitable for the load of the cable tray to the roof.

PPS1 L30_GZM The pad has a pressed trunking made of steel with Magnelis® surface treatment. Installation of the cable tray is done by direct attachment with a self-drilling screw (eg. STP 4.2X25 TX) through the bottom of the cable tray to the base in place of the metal trunking. The wire cable tray is installed using direct fastening with a self-drilling screw (STP 4.2x25 TX) and a 6706_PO clamp behind the wires located at the bottom of the tray into the substrate at the point of the metal rail.



PPS1 3XM8_GMLZ The pad has 3 pcs of M 8 nuts pressed into it. The cable tray is attached to the base with a bolt S 8X20. Wire tray is attached to the base with the middle hanger DZCZ and the bolt S 8X20. We recommend a maximum tightening torque of 2 Nm. The pad is possible to use also as a flap for attaching other supporting structures, e.g. mounting profiles, ceiling profiles etc.



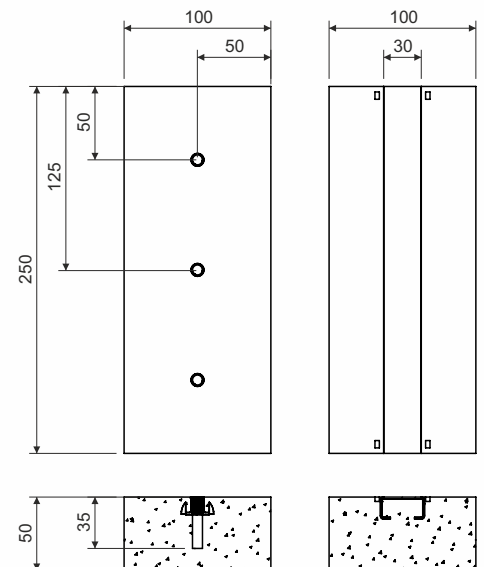
material: rubber SBR granulate 1-3 mm, PU binder
 Trunking - steel with surface treatment Magnelis®
 Nut - steel non-electrolytically plated with zinc microlamellas

chemical resistance: Do not use in the presence of oils, crude oil and their derivatives, strong acids and bases.

temperature resistance: 80 °C

fire reaction class: E_{ii} according to ČSN EN 13501-1

weight: 1,15 kg / 1,06 kg



 **WARNING****Risk of Incorrect Installation**

Follow the manufacturer's instructions for the proper fastening of cable trays to the support base. Incorrect installation may result in loosening or failure of the system.

Risk of Mechanical Damage

The support pad is made of rubber material, which can be damaged by sharp objects or improper handling. Damage to the material may reduce its load-bearing capacity and lifespan.

Risk of Injury

During drilling, cutting, or other destructive operations on the product, dust particles may be released. It is therefore necessary to use protective equipment. Always wear appropriate personal protective equipment when handling the product.

Safe Use

Under normal and foreseeable conditions of use, there are no risks to consumers, provided that proper installation and usage are carried out in accordance with the installation manual.

recycling codes:

